



PRS Connect Manual

Version 1.0
© 2009 Banxia Software Ltd

PRS Remote Connect Documentation

© 2009 Banxia Software Ltd

Version 1.0. Published 14 April 2009
First published August 2000

Copyright © 2007-2009 Banxia Software Limited

All rights reserved. No part of this publication may be reproduced, stored in a retrieval system, or transmitted or utilised in any form or by any means, electronic, mechanical, photocopying, recording or otherwise, without permission in writing from the Publisher. This book may not be lent, resold, hired out or otherwise disposed of by way of trade in any form of binding or cover other than that in which it is published, without the prior consent of the Publisher.

Banxia Software Limited
P.O. Box 134
Kendal
LA9 4TP
UK

Tel: +44 (0)1539 815660 Fax: +44 (0)1539 815661
Email: info@banxia.com Web: www.banxia.com

Published in the UK by Banxia Software Limited. Printed in the UK.

The software, manual(s) and other materials relating to the software are protected by United Kingdom copyright law and international treaty provisions. They are provided to you under licence, a copy of which is included in the package.

All parts of the PRS Remote Connect™ program and packaging, documentation and other related items are © Copyright 2007-2009 Banxia Software Limited unless specifically noted. PRS Remote Connect™ is developed, marketed and distributed by Banxia Software Limited.

Banxia® is a registered trademark of Banxia Holdings Limited. PRS Remote Connect is a trademark of Banxia Software Limited. Banxia Software Limited is registered in England #2966533.

Information in this document is subject to change without notice and does not represent a commitment on the part of Banxia Holdings Limited, Banxia Software Limited or any reseller. This document does not represent a fixed specification or warranty. It is intended only to give an idea of what PRS Remote Connect™ may be like. We reserve the right to change any part of PRS Remote Connect™ without prior notice.

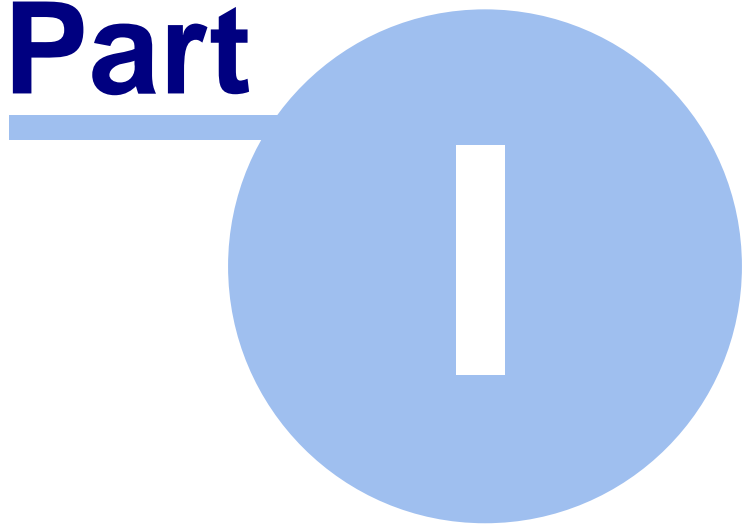
Banxia Holdings Limited and Banxia Software Limited specifically disclaim all warranties either expressed or implied, including but not limited to, implied warranties of merchantability and fitness for a particular purpose with respect to defects in the software, CD-ROM and documentation. Any documentation supplied with the package does not represent a specification for the software. Similarity to results obtained by other software shall not be taken as indication that the results will be similar in any other situation. In no event shall Banxia Holdings Limited or Banxia Software Limited be liable for any loss of profit or any other damage, including but not limited to special, incidental, consequential or other damages caused by any product or service provided.

Microsoft and Microsoft Windows are trademarks of Microsoft Corporation. Other trademarks are registered to their respective owners.

Table of Contents

Part I Parts of the system	2
Part II Quick Start - using the keypads	4
1 The remote sites	4
2 The central station	5
Part III The Central Station	9
1 System requirements	9
2 Installing from download	9
3 Running PRS Remote Connect	10
4 Configuration	11
5 Install code	11
6 Finishing the session	12
7 Using on a Mac or Linux	12
Part IV The Remote Sites	14
1 System requirements	14
2 Installing from download	14
3 Installing the receiver	15
4 Operating the software	19
5 Configuration	20
6 Finishing the session	20
Index	21

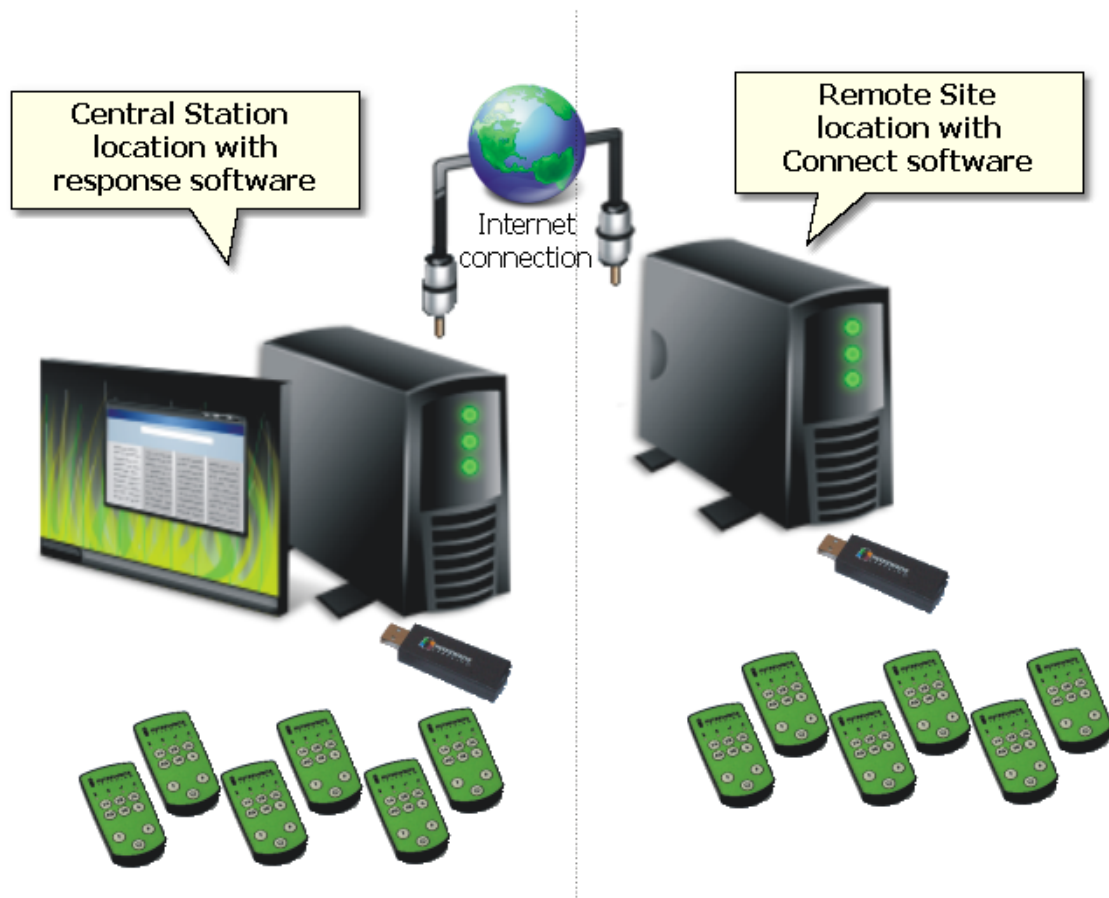
Part



Parts of the system

1 Parts of the system

The PRS Remote Connect system has a number of parts. Each system will have a single central station, and one or more remote sites.



Central Station

The main location is the central station, and it has the main response software and the Central Station software that talks to the remote sites. The screen of this computer is usually on a big screen, and repeated on the screens at the remote sites. Often it will have its own receiver, but this is not a requirement if there are no people at this site.

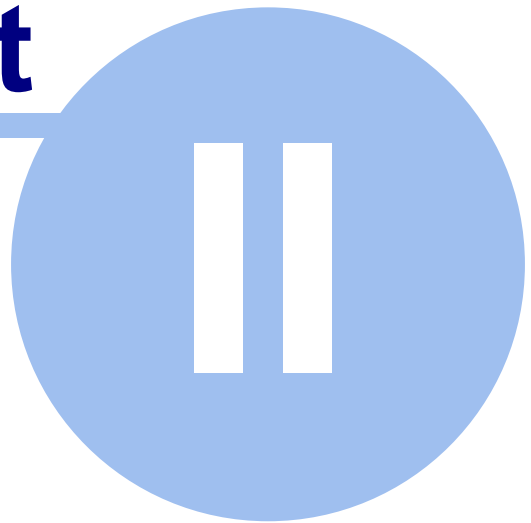
[More on setting up and running the Central Station](#) ⁹

Remote Sites

Each remote site will use the connect software to make it appear that the receiver at the remote site is actually at the central station, and thereby allow it to obtain the responses from the handsets.

[More on setting up and running the Remote Sites](#) ¹⁴

Part



**Quick Start - using
the keypads**

2 Quick Start - using the keypads

If your system is already installed and running, but you want to know how to use it quickly, read here. If it is the first time you are using it, or it is not yet installed, then you need to read the rest of the manual first.

2.1 The remote sites

Using the keypads at the remote sites is simple, but you must use the local channel display, and not that shown on the Impact Explorer or Response software that you can see from the central station.

On your display, you will have a small window shown at the top. It looks like:



The channel display is shown on the dialog here, and also on the top and bottom of the Impact Explorer window.



To turn on the Cricket keypad, hold the power button for a second or two, until the battery light comes on. The connection light will flash rapidly.

Enter the two digit code that is displayed on the right of the channel display, so "3 5" in the example shown (<9,35>). The keypad will connect to the system, and the tick will light briefly and the connection light will flash just occasionally.

If it does not connect, try again. Make sure you are connecting to the correct channel - do not use the central station values, only the local.

To turn on the PRS-RF keypad, slide the power switch up. The display will show the battery status, and then start to scan for the channel. You can jump to the right channel quickly by pressing the single code that is displayed on the left of the channel display, so "9" in the example shown (<9,35>). The keypad will connect to the system, and await a new question to respond to.

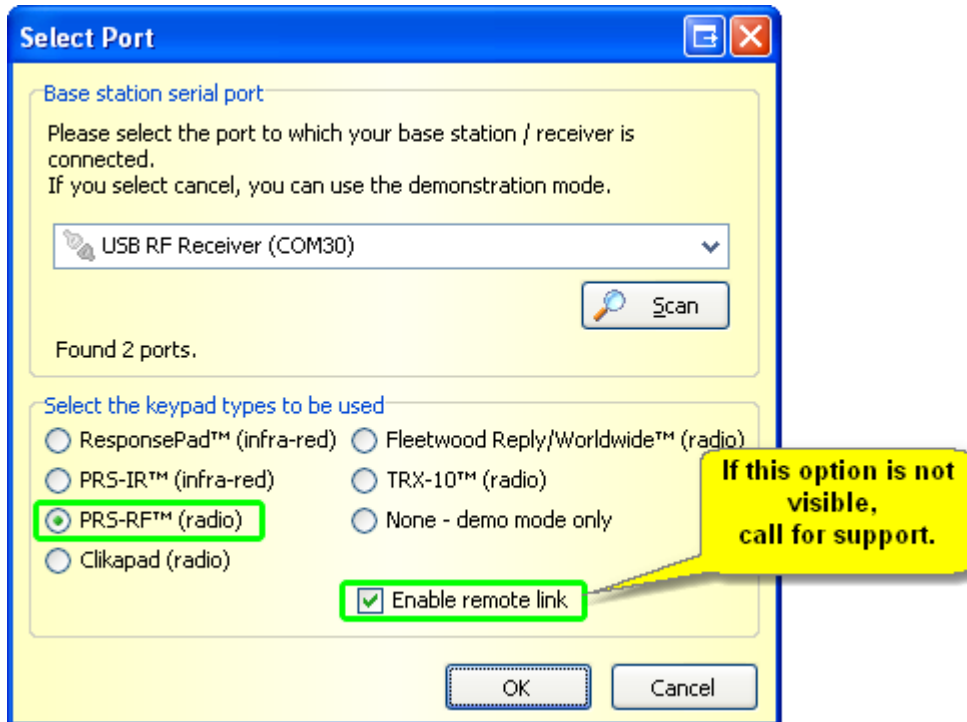
If it does not connect, you can use the * key to enter the menu and start a new scan. If you leave it then it will find the local receiver on its own.

2.2 The central station

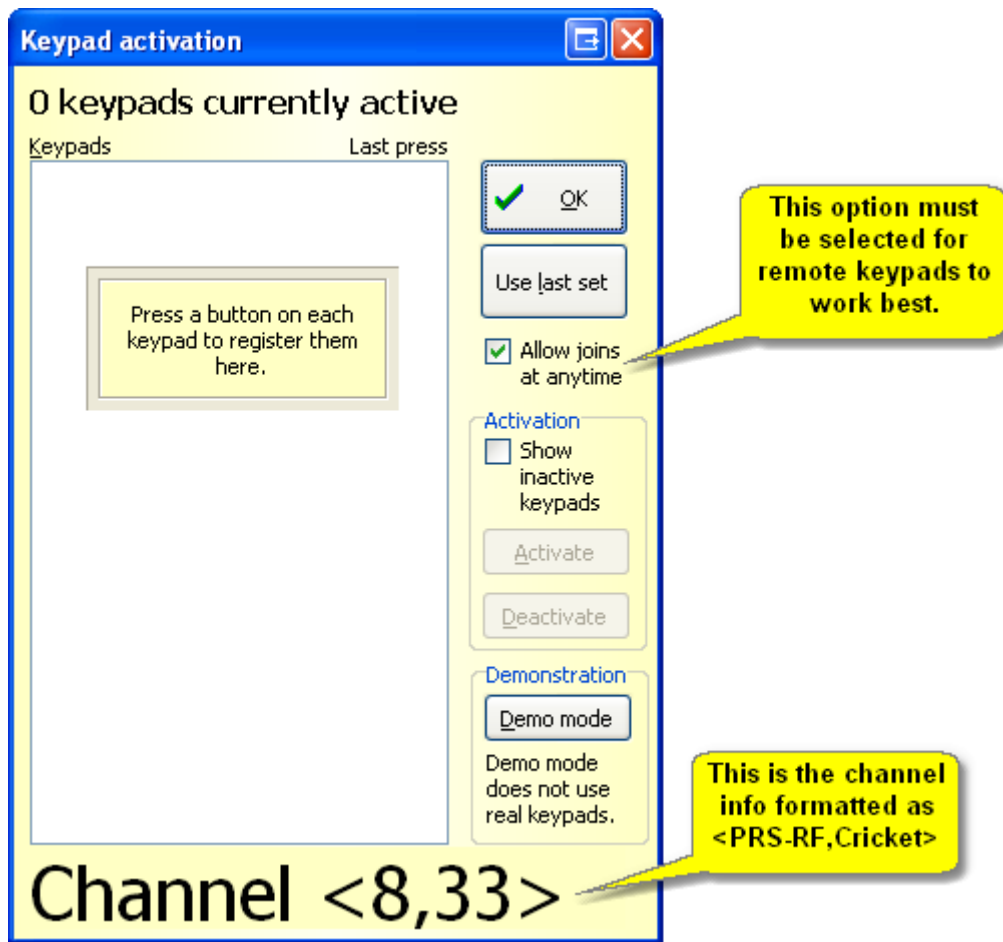
Using the keypads at the central station is just the same as when you are not using the remote links. Run the software (Impact Explorer or Response) and use its normal facilities to select the keypad connection.

Impact Explorer

In Impact Explorer, use the Change COM port menu item to select the type of receiver in use:



Once that is selected, use the Search for Keypads menu item.



The channel display is shown on the dialog here, and also on the top and bottom of the Impact Explorer window.



To turn on the Cricket keypad, hold the power button for a second or two, until the battery light comes on. The connection light will flash rapidly.

Enter the two digit code that is displayed on the right of the channel display, so "3 3" in the example shown (<8,33>). The keypad will connect to the system, and the tick will light briefly and the connection light will flash just occasionally.

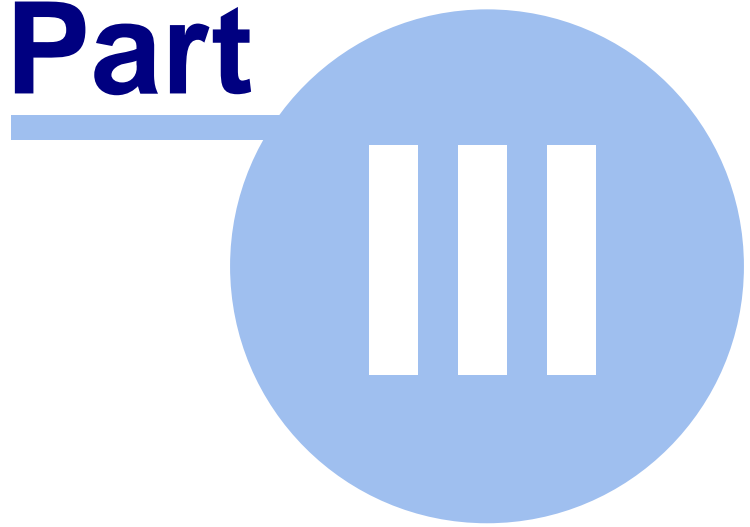
If it does not connect, try again. Make sure you are connecting to the correct channel (if you are remote, do not use the central station values, only the local).



To turn on the PRS-RF keypad, slide the power switch up. The display will show the battery status, and then start to scan for the channel. You can jump to the right channel quickly by pressing the single code that is displayed on the left of the channel display, so "8" in the example shown (<8,33>). The keypad will connect to the system, and await a new question to respond to.

If it does not connect, you can use the * key to enter the menu and start a new scan. If you leave it then it will find the local receiver on its own.

Part



The Central Station

3 The Central Station

The main location is the central station, and it has the main response software and the Central Station software that talks to the remote sites. The screen of this computer is usually on a big screen, and repeated on the screens at the remote sites. Often it will have its own receiver, but this may not be a requirement if there are no people at this site. (The particular display software you are using may need a receiver.)

This section describes how to install and operate the central station.

3.1 System requirements

The basic (minimum) system requirements for running PRS Remote Connect™ are a PC with:

- 30Mb of hard disk space
- 512Mb of RAM
- one PRS-RF hub receiver, connected to the PC USB port on each remote site
- at least one (but probably more) wireless keypads at each site

Before installing PRS Remote Connect™ you should check that your computer is suitable for running the software. The software requires Microsoft Windows (Windows 2000, Windows XP and Vista are all suitable). Windows 95, 98 and NT4 are not supported.

The keypad response system that works with PRS Remote Connect™ is available from Banxia® Software Limited. Keypads and associated receivers can be bought or hired (for short periods), please contact us for details. If you already have keypads purchased for other software, then it is possible that they are compatible with PRS Remote Connect™. Contact us with details of your software and keypads for confirmation.

3.2 Installing from download

Download the PRS Remote Connect™ installers using the details provided to you.

Central Station Install



To install the software on the central station, run the "**PRSCentral2Setup**" application. Follow the prompts in the set-up wizard to install the software. The wizard will provide suggestions (the default options) which you can accept unless you require otherwise. At the end of the installation you may have to restart your computer (if prompted) to ensure that the components are properly configured.

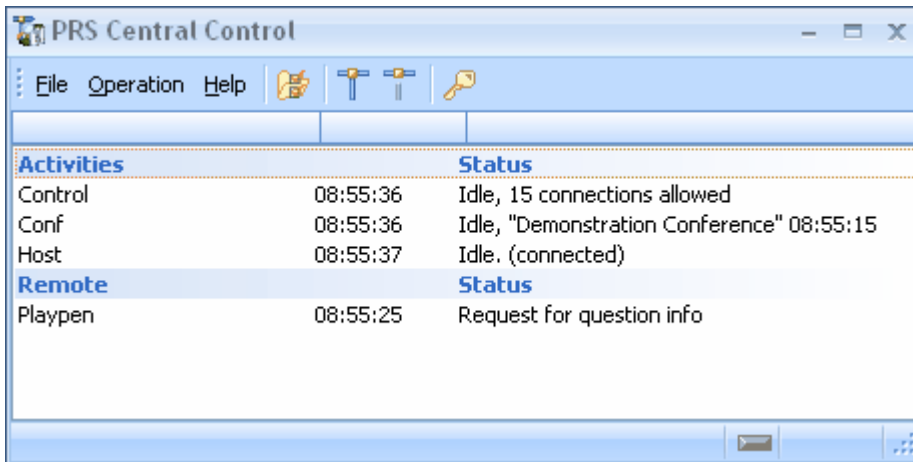
You will now need to configure the central station software to tell it where to look for the remote sites.

Remote Sites

Remote site installation is detailed in the [Remote Sites section](#)¹⁴.

3.3 Running PRS Remote Connect

You will find PRS Remote Connect™ as an item in the Programs menu, PRS Remote Central™ sub-menu. Select the PRS Remote Connect item to start the application.



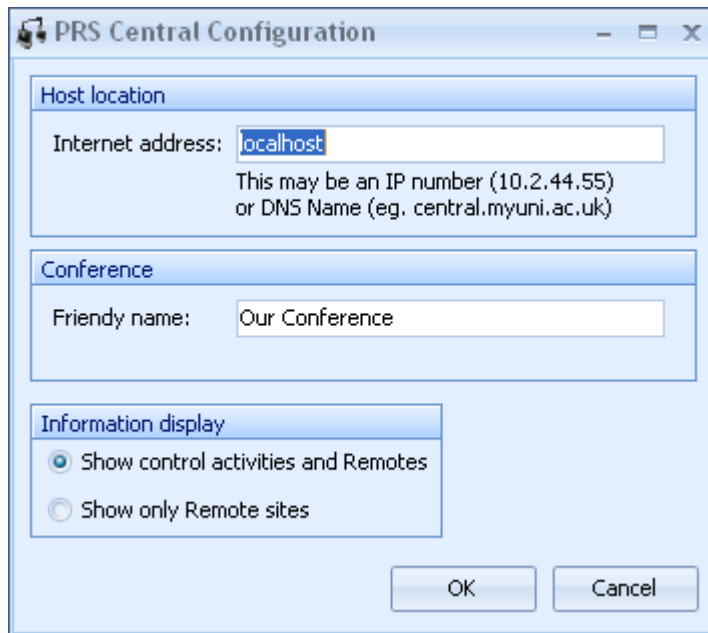
The connections to the central location from remote sites are made using "port 7256" so it may be necessary to open this port in firewalls. Supporting such changes is not something we are able to do. Again, the network administrator should be able to sort this out.

The number of remote sites that can be connected is controlled by the install code. The status of each item is shown in the display.

Remembering the settings

You can close the Central Control application at any time, as the connections are maintained by a "service" which is a background application. This means that this application is used only for configuring the settings and showing operational status.

3.4 Configuration



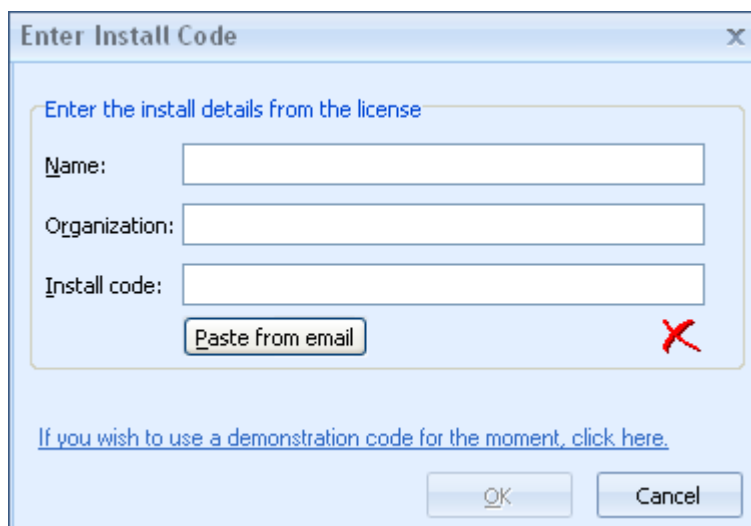
The screenshot shows the 'PRS Central Configuration' dialog box. It has three main sections: 'Host location', 'Conference', and 'Information display'. In the 'Host location' section, the 'Internet address' field contains 'localhost'. Below it, a note says 'This may be an IP number (10.2.44.55) or DNS Name (eg. central.myuni.ac.uk)'. The 'Conference' section has a 'Friendly name' field containing 'Our Conference'. The 'Information display' section has two radio buttons: 'Show control activities and Remotes' (which is selected) and 'Show only Remote sites'. At the bottom are 'OK' and 'Cancel' buttons.

This dialog allows you to specify the internet address of the host application that the software will be connecting to (the Interwrite Response or Impact Explorer computer). Most often this will be the same computer, so "localhost" is the best name. If it is on another computer in the network, then you can specify it here.

The friendly name is sent to the remote sites to let them know they are connected to the right location.

The information display allows you to reduce the information displayed if required.

3.5 Install code



The screenshot shows the 'Enter Install Code' dialog box. It has a title bar with a close button. The main area is titled 'Enter the install details from the license'. It contains three text input fields: 'Name:', 'Organization:', and 'Install code:'. Below the 'Install code:' field is a 'Paste from email' button. To the right of this button is a red 'X' icon. At the bottom, there is a blue hyperlink that says 'If you wish to use a demonstration code for the moment, click here.' and two buttons: 'OK' and 'Cancel'.

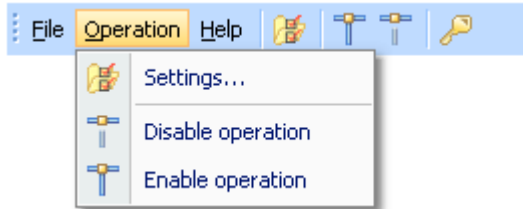
Enter the install code provided. If you have it on the clipboard, you can use the Paste from email

button to copy it accurately.

The install code determines how many remote sites can connect to the central station.

3.6 Finishing the session

At the end of a session, when the connection to the remote sites is no longer needed, we recommend that you disable operation using the menu in the control application.



3.7 Using on a Mac or Linux

This software is designed to work on a Windows operating system, and installs a "service" (background) application on both the central and remote computers to do the main work. The central display computer can be of any suitable type if you are using the Interwrite Response software as your central software as you can set the host location to be another computer.

If you use a virtualisation system to run Windows applications, then this will work well for the central station, but the remote locations must have access to the USB ports so that it can communicate with the receiver. As the remote station is not needed for any presentation details (other than getting the channel information), any Windows PC could be used.

Part



The Remote Sites

4 The Remote Sites

Each remote site will use the connect software to make it appear that the receiver at the remote site is actually at the central station, and thereby allow it to obtain the responses from the handsets.

This section describes how to install and operate the remote sites.

4.1 System requirements

The basic (minimum) system requirements for running PRS Remote Connect™ are a PC with:

- 30Mb of hard disk space
- 512Mb of RAM
- one PRS-RF hub receiver, connected to the PC USB port on each remote site
- at least one (but probably more) wireless keypads at each site

Before installing PRS Remote Connect™ you should check that your computer is suitable for running the software. The software requires Microsoft Windows (Windows 2000, Windows XP and Vista are all suitable). Windows 95, 98 and NT4 are not supported.

The keypad response system that works with PRS Remote Connect™ is available from Banxia® Software Limited. Keypads and associated receivers can be bought or hired (for short periods), please contact us for details. If you already have keypads purchased for other software, then it is possible that they are compatible with PRS Remote Connect™. Contact us with details of your software and keypads for confirmation.

4.2 Installing from download

Download the PRS Remote Connect™ installers using the details provided to you.

Central Station Install

Remote site installation is detailed in the [Central Station section](#)⁹.

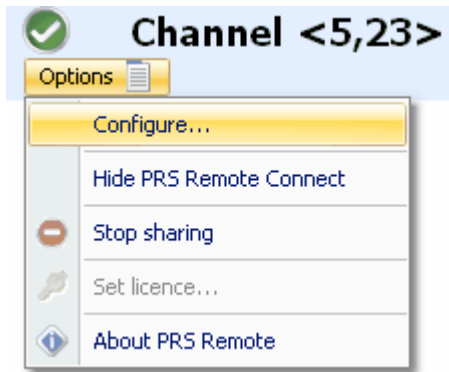
Remote Sites



To install the software on the remote sites, run the "**PRSRemote2Setup**" application. Follow the prompts in the set-up wizard to install the software. The wizard will provide suggestions (the default options) which you can accept unless you require otherwise. At the end of the installation you may have to restart your computer (if prompted) to ensure that the components are properly configured.



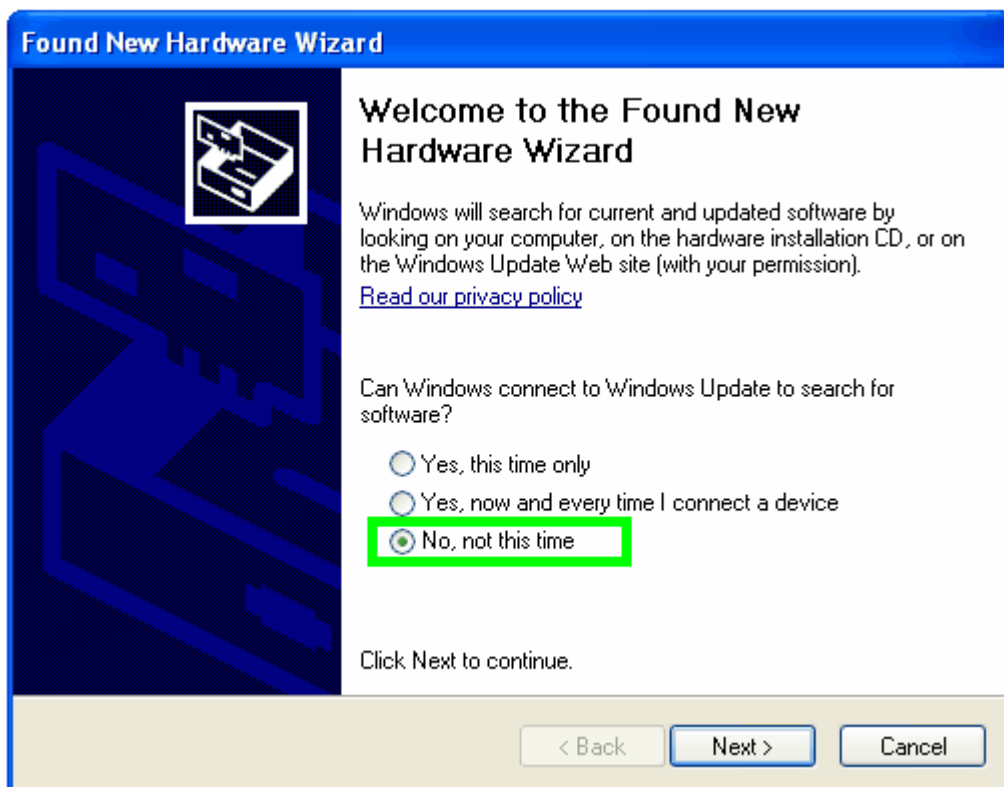
You must set the destination address for the central computer using the [configure menu item](#)²⁰.



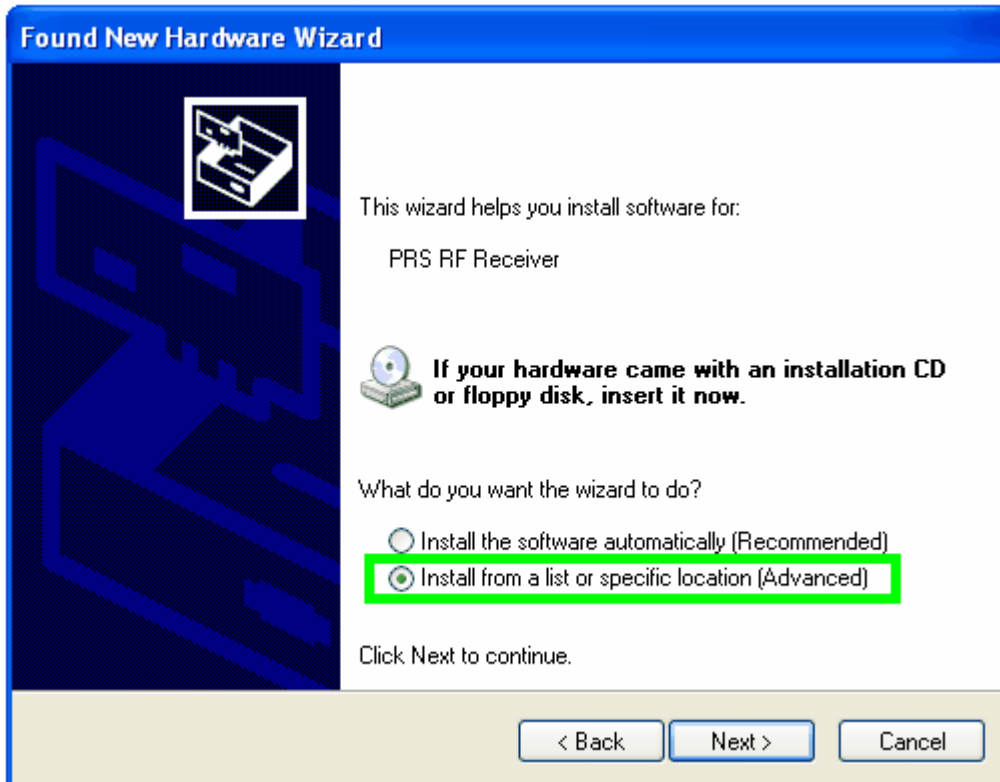
The remote site operation is now automatic, and you do not need to do anything more than ensure that the receiver is plugged in and recognised by the computer.

4.3 Installing the receiver

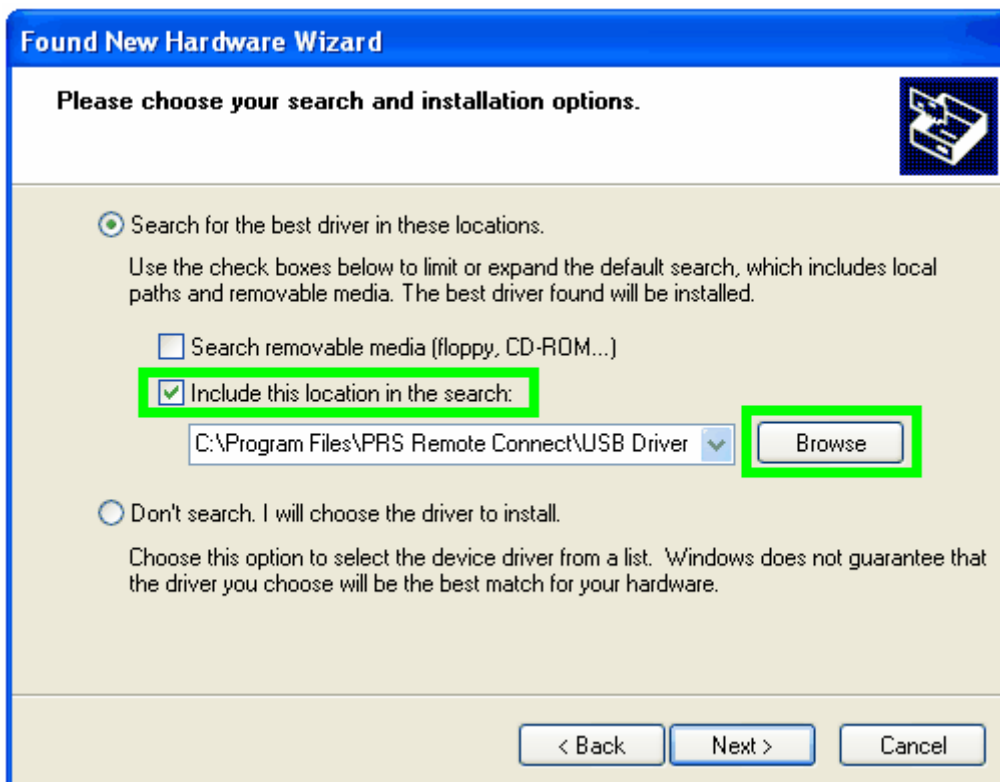
If this is the first time you have used the receiver on a computer, then plugging the receiver in will cause the Windows Plug and Play system to start the new hardware wizard.



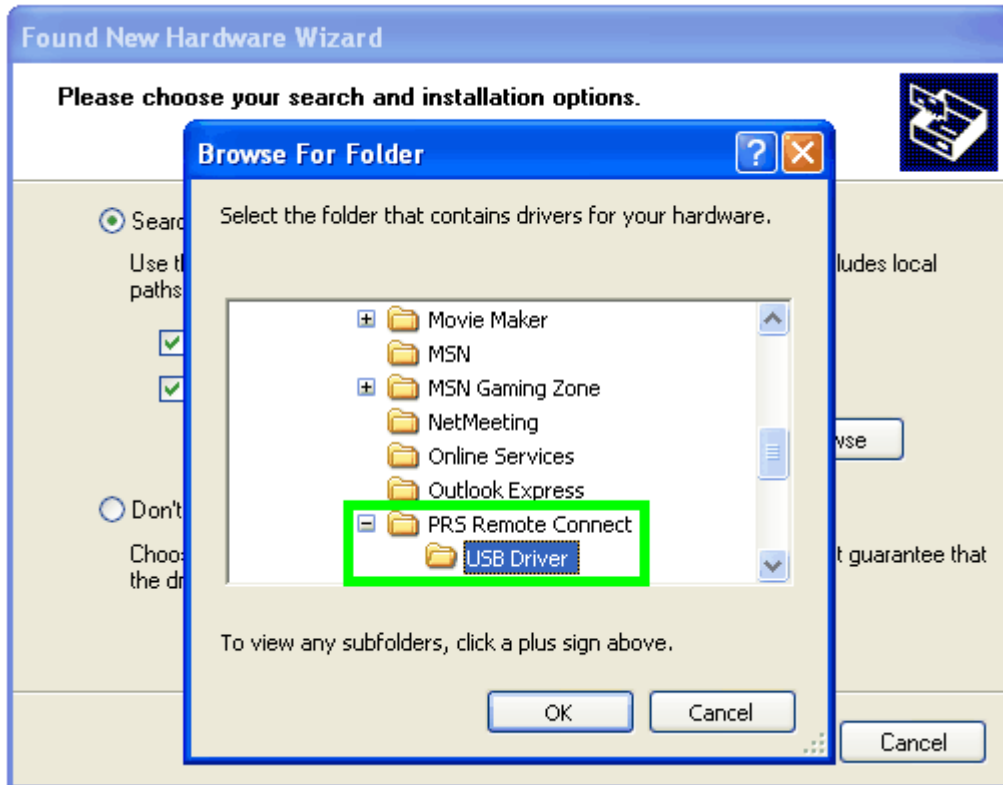
There is no benefit in searching Windows Update for a driver. The driver information is installed with the software.



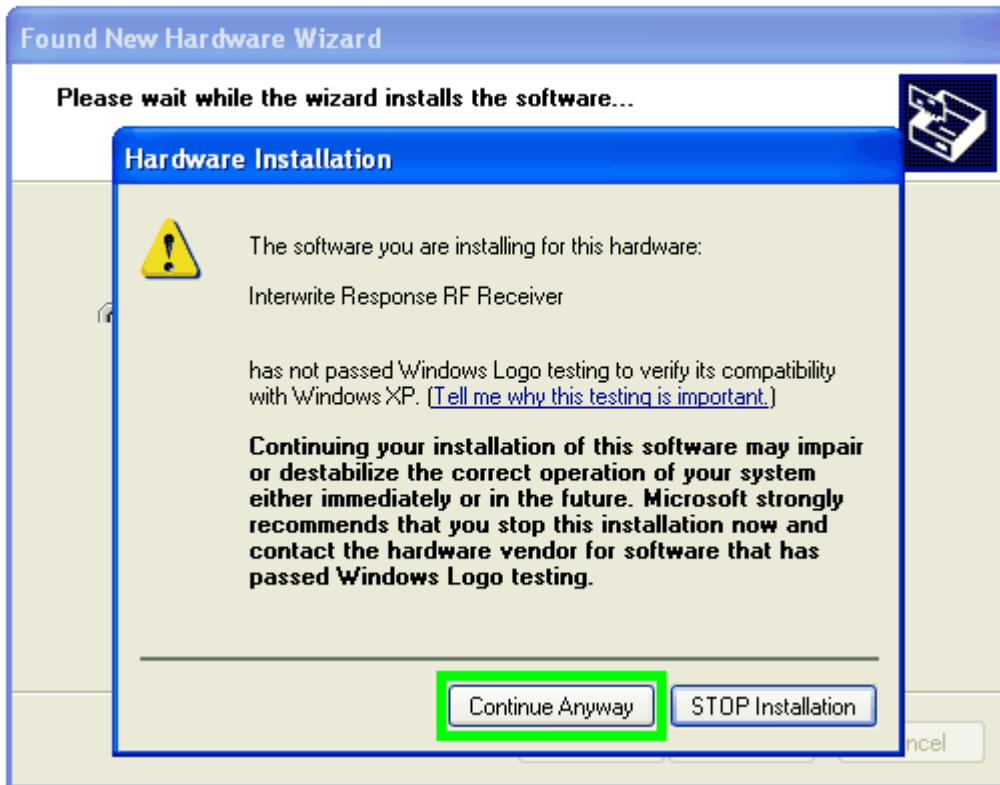
Select to install from a list or specific location.



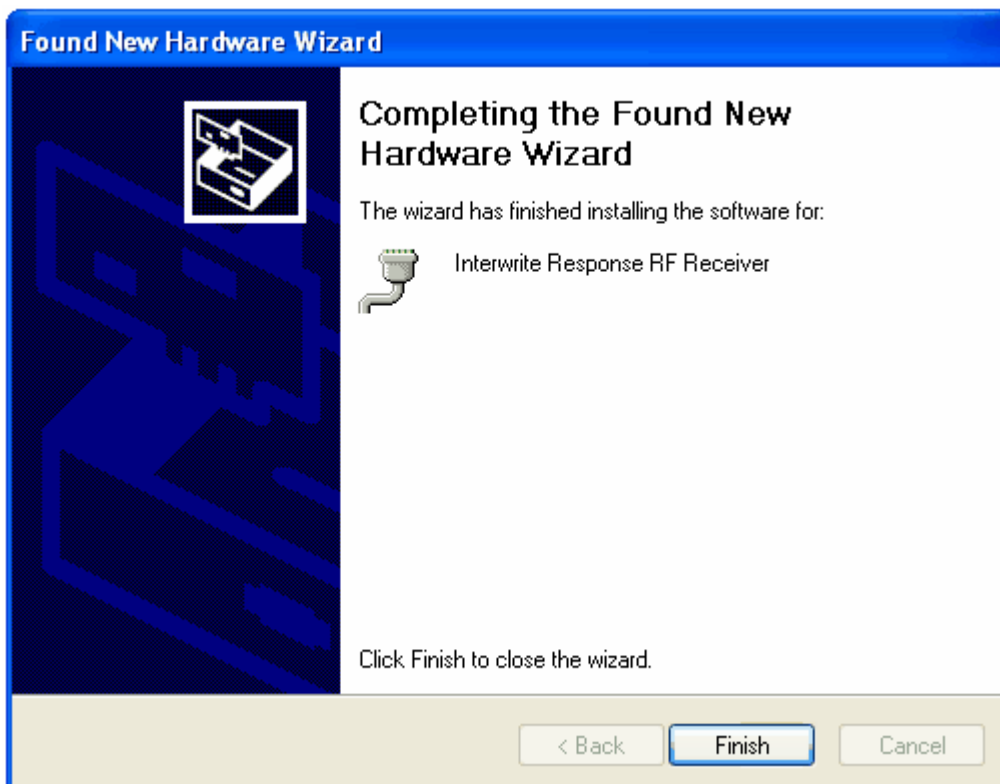
Check the box to include a location in the search (it does not matter if you leave the floppy/CD option on, but it may add delay). Then click the Browse button to locate the folder.



Locate the PRS Remote Connect folder in the Program Files folder. You will find a folder there called USB Driver. Select this, then click OK. Click Next at the wizard to continue with the load.



The wizard will show a warning that the driver has not passed logo testing. In fact, the driver used is a standard Windows XP driver, so you can click Continue Anyway here.



When the USB hub receiver is installed, you can click Finish. The system is ready for use.

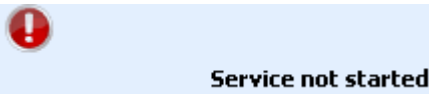
The PRS Remote Connect software will then show the receiver is active with the channel (for PRS-RF use) and jump code (for Cricket use).



4.4 Operating the software

This section describes the various options available in the Remote Connect monitor software.

Service control



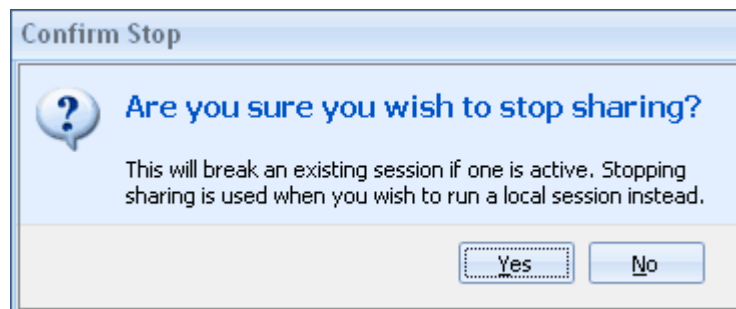
If the service is not started (a service is a background application that performs a task) then this will be shown in the display. To start or stop the service, the [services administrator tool](#) should be used.

Setting the central location

Move the mouse over the status window and the Control menu will appear. Select the configure button and then enter the internet address of the central location. This can either be an "IP address" which is a number of the form 1.2.3.4, or it can be a "DNS address" which is a textual address of the form sub.domain.tld. Which one applies depends on your network - if you are not sure, please ask your network administrator.

Sharing control

Click the Stop sharing button to allow the use of the receiver on the local computer. When sharing is active, the central station can use the receiver, but the local software cannot. You must stop sharing for normal, local use. You will be prompted to confirm that you wish to stop sharing, because if you turn it off during a session, then the central station will lose contact and the whole session will need to be restarted.



To start sharing again, click on the Start sharing button. It will start immediately.

About PRS Connect

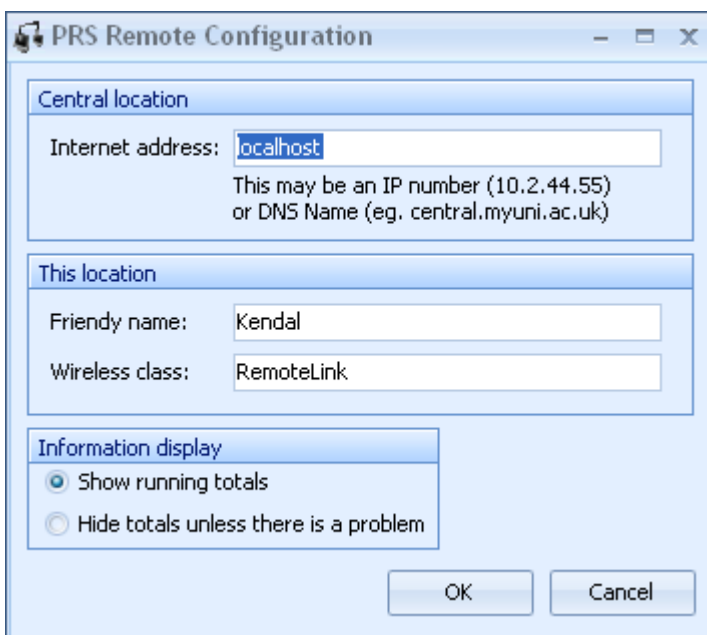
Click the information button to show version information for the sharing application.

Closing the software

In normal operation, there is no need to stop the software running. If you click the Close button, it will minimise to the icon tray on the task bar. If you wish to close it, either right-click on the window, or on the icon in the tray, and select the Exit menu item.



4.5 Configuration



This dialog allows you to set the address of the central location, and the friendly name that will be displayed on the central display. The wireless class name (up to 12 characters) is shown on the display of the PRS-RF keypad.

The information display setting controls whether you have a running total of responses sent, or to hide the totals unless there is a problem. The latter may be useful to reduce distraction and to stop people pressing needlessly.

4.6 Finishing the session

At the end of a session, when the connection to the remote sites is no longer needed, we recommend that you stop sharing the receiver. This will allow local use, and stop any confusion about why the receiver is "not operating" (which will be because it is under the control of the Remote Connect software).

Index

- < -

<9,35> display interpretation 4

- C -

Central Station 5, 9
Central, Finishing the session 12
Channel display 4, 5
Controlling sharing 19
Cricket keypad 4, 5

- D -

DNS address 10
Downloading 9, 14

- E -

Enable connection 10
Ending the session, Central 12
Ending the session, Site 20

- F -

Finishing the session, Central 12
Finishing the session, Site 20
Firewall configuration 10

- G -

Getting started 4

- I -

Impact Explorer 5
Installing from download 9, 14
Interpreting <9,35> display 4
IP address 10

- L -

Linux 12
Lock settings 10
Logo testing warning 15

- M -

Macintosh 12
Main location 9

- N -

New hardware wizard 15

- P -

Port 3900 10
PRS-RF keypad 4, 5

- Q -

Quick start 4

- R -

Remote Sites 4, 14
Running PRS Remote Connect 10

- S -

Satellite location 4, 14
Service control 19
Setup from download 9, 14
Sharing control 19
Sharing display 15
Site, Finishing the session 20
System requirements 9, 14

- U -

USB receiver 15

- V -

Virtual machines 12

- W -

Welcome to the found new hardware wizard 15

Windows required 12

